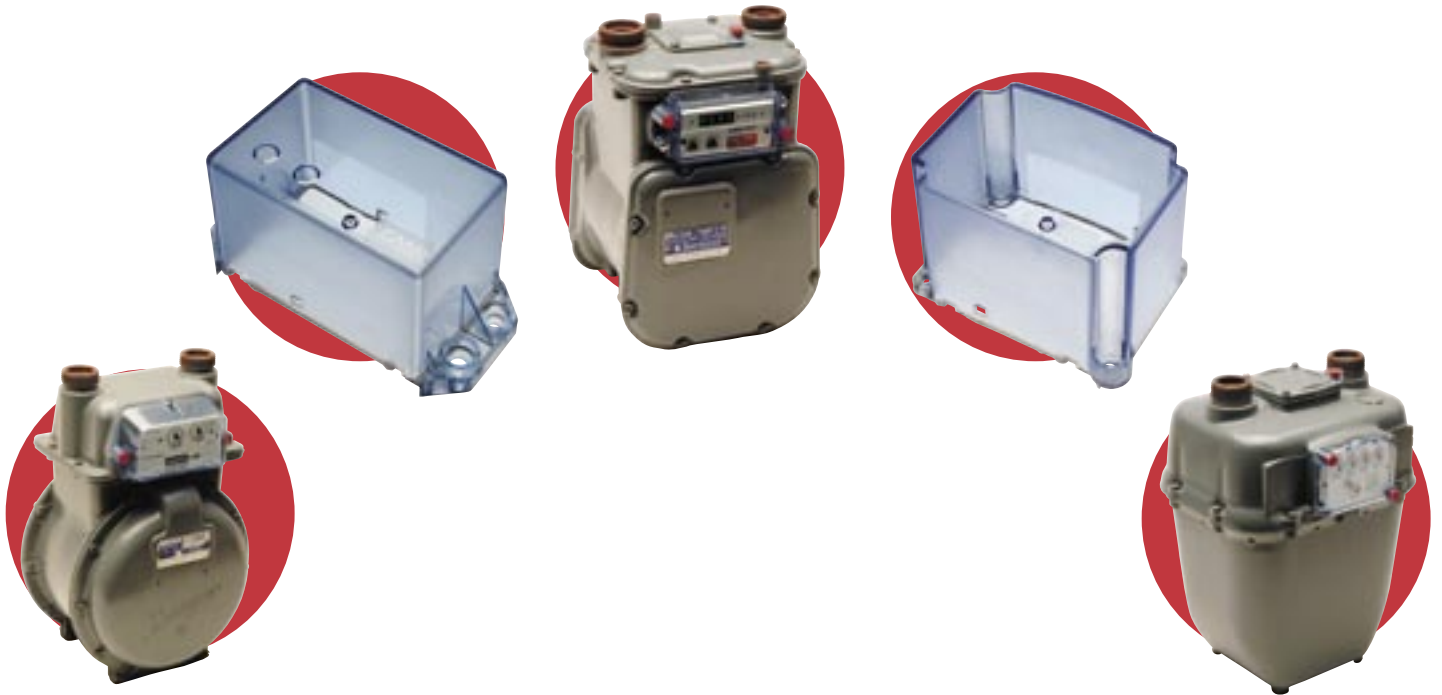


Supplying the Natural Gas Industry with Quality Products and Services Since 1975



CAROLINA MOLDINGS, INC.



Since 1975 Carolina Moldings, Inc. has been producing the highest quality index covers, tamper seals, and repair parts for virtually every gas meter currently in service.

Carolina Moldings broke new ground by establishing the “red plug” tamper seal as the standard for all index covers throughout the industry. Today, we maintain the same spirit of progress and forward thinking that has marked our company from the beginning



TABLE OF CONTENTS

American Index Covers	Page 3
Sensus/Rockwell Index Covers	Page 4
ITRON/Sprague Index Covers	Page 5
Other Index Covers	Page 6 & 7
Residential Tamper Systems	Page 8 & 9
Commercial Tamper Systems	Page 10 & 11
Paint Covers	Page 12 & 13
Meter Screws	Page 14
Miscellaneous Parts & Meter Gaskets	Page 15



AMERICAN INDEX COVERS



A-101 Fits American AL 175 AL425 Meters; Circle or Direct Read • Will accept 2 Snap Seal #1 tamper plugs (not included)	105/Case
--	----------

A-101-1 Consists of A-101 with SureSeal preapplied silicone gasket	105/Case
--	----------

A-101-12 Consists of A-101-1 with 2 Snap Seal tamper plugs	105/Case
--	----------

A-101-2 Consists of A-101 with 2 Snap Seal tamper plugs	105/Case
---	----------



A-101-OS Fits American AL 175 AL425 Meters; Circle or Direct Read • Will not accept Snap Seal tamper plugs	105/Case
---	----------

A-101-OS-1 Consists of A101OS with SureSeal preapplied silicone gasket	105/Case
--	----------



A-102 Fits American 5B Metric Iron & Aluminum Meters • Will not accept Snap Seal tamper plugs	169/Case
--	----------



A-103 Fits American 35B – 500B and AL800 – AL5000 Meters • Will accept 2 Snap Seal #1 tamper plugs (not included)	54/Case
--	---------

A-103-1 Consists of A-103 with SureSeal preapplied silicone gasket	54/Case
--	---------

A-103-12 Consists of A-103-1 with 2 Snap Seal tamper plugs	54/Case
--	---------

A-103-2 Consists of A-103 with 2 Snap Seal tamper plugs <i>* PLEASE SEE COMMERCIAL TAMPER SYSTEMS PAGE FOR A-103 TAMPER KITS</i>	54/Case
---	---------



A-103-OS Fits American 35B – 500B and AL800 AL5000 Meters • Will not accept Snap Seal tamper plugs	54/Case
---	---------

A-103-OS-1 Consists of A103OS with SureSeal preapplied silicone gasket	54/Case
--	---------



A-40-G Fits ITRON 40G ERT for American Meter • Will accept 2 Tophat tamper plugs (not included)	68/Case
--	---------

A-40-G-1 Consists of A-40-G with SureSeal preapplied silicone gasket	68/Case
--	---------

A-40-G-12 Consists of A-40-G-1 with 2 Tophat tamper plugs	68/Case
---	---------

A-40-G-2 Consists of A-40-G with 2 Tophat tamper plugs	68/Case
--	---------



SENSUS / ROCKWELL INDEX COVERS



R-103 Fits Rockwell 150 415 Short Screw Meters • Will accept 2 Snap Seal #1 tamper plugs (not included)	220/Case
--	----------

R-103-1 Consists of R103 with SureSeal preapplied silicone gasket	200/Case
---	----------

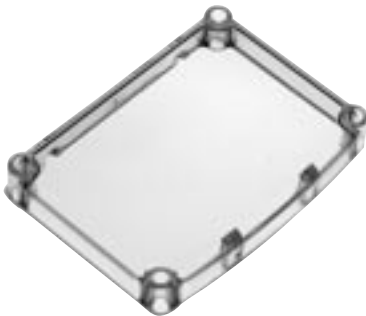
R-103-12 Consists of R1031 with 2 Snap Seal tamper plugs	200/Case
--	----------

R-103-2 Consists of R103 with 2 Snap Seal tamper plugs	220/Case
--	----------



R103-OS Fits Rockwell 150-415 Short Screw Meters • Will not accept Snap Seal tamper plugs	260/Case
--	----------

R103-OS-1 Consists of R-103-OS with SureSeal pre-applied silicone gasket	260/Case
--	----------



R-104 Fits Rockwell 150-415 Long Screw Meters • Will not accept Snap Seal tamper plugs	260/Case
---	----------

R-104-1 Consists of R-104 with SureSeal preapplied silicone gasket	260/Case
--	----------



R-105 Fits Rockwell R750-R5000 Meters • Will accept 2 Snap Seal #2 tamper plugs (not included)	45/Case
---	---------

R-105-2 Consists of R-105 with 2 Snap Seal #2 * PLEASE SEE COMMERCIAL TAMPER SYSTEMS PAGE FOR R-105 TAMPER KITS *	45/Case
--	---------



R-109 Fits Rockwell 175 Standard EMCO • Will accept 2 Snap Seal #1 tamper plugs (not included)	75/Case
---	---------

R-109-2 Consists of R-109 with 2 Snap Seal tamper plugs	75/Case
---	---------



R-40G Fits ITRON 40G ERT for Rockwell Meter • Will accept 2 Tophat tamper plugs (not included)	80/Case
---	---------

R-40G-1 Consists of R-40G with SureSeal preapplied silicone gasket	80/Case
--	---------

R-40G-12 Consists of R-40G-1 with 2 Tophat tamper plugs	80/Case
---	---------

R40G2 Consists of R-40G with 2 Tophat tamper plugs	80/Case
--	---------



ACTARIS / SPRAGUE INDEX COVERS



S-104 Fits Sprague 1A-240 Meters; One screw hole meters • Will accept 1 Snap Seal #1 tamper plug (not included)	120/Case
S-104-1 Consists of S-104 with SureSeal preapplied silicone gasket	120/Case
S-104-12 Consists of S-104-1 with 1 Snap Seal tamper plug	120/Case
S-104-2 Consists of S-104 with 1 Snap Seal tamper plug	120/Case



S-106 Fits Sprague 305-400 Non Seal Old Style Meters • Will accept 1 Snap Seal #1 tamper plug (not included)	90/Case
S-106-1 Consists of S-106 with SureSeal preapplied silicone gasket	90/Case
S-106-12 Consists of S-106-1 with 1 Snap Seal tamper plug	90/Case
S-106-2 Consists of S-106 with 1 Snap Seal tamper plug	90/Case



S-105 Fits Sprague 175-400 Meters; Slant Face Meters • Will accept 2 Snap Seal #1 tamper plugs (not included)	105/Case
S-105-1 Consists of S-105 with SureSeal preapplied silicone gasket	105/Case
S-105-12 Consists of S-105-1 with 2 Snap Seal tamper plugs	105/Case
S-105-2 Consists of S-105 with 2 Snap Seal tamper plugs	105/Case



S-107 Fits Sprague RM Meters • Will accept 2 Snap Seal #1 tamper plugs (not included)	240/Case
S-107-1 Consists of S-107 with SureSeal preapplied silicone gasket	240/Case
S-107-12 Consists of S-107-1 with 2 Snap Seal tamper plugs	240/Case
S-107-2 Consists of S-107 with 2 Snap Seal tamper plugs	240/Case



OTHER INDEX COVERS



A-40G Fits ITRON 40G ERT for American Meter • Will accept 2 Tophat tamper plugs (not included)	68/Case
---	---------

A-40G-1 Consists of A-40G with SureSeal preapplied silicone gasket	68/Case
--	---------

A-40G-12 Consists of A-40G-1 with 2 Tophat tamper plugs	68/Case
---	---------

A-40G-2 Consists of A-40G with 2 Tophat tamper plugs	68/Case
--	---------



R-40G Fits ITRON 40G ERT for Rockwell Meter • Will accept 2 Tophat tamper plugs (not included)	80/Case
---	---------

R-40G-1 Consists of R-40G with SureSeal preapplied silicone gasket	80/Case
--	---------

R-40G-12 Consists of R-40G-1 with 2 Tophat tamper plugs	80/Case
---	---------

R-40G-2 Consists of R-40G with 2 Tophat tamper plugs	80/Case
--	---------



N-108 Fits Lancaster 175 – 250 Meters • Will accept 2 Snap Seal #1 tamper plugs (not included)	150/Case
---	----------

N-108-1 Consists of N-108 with SureSeal preapplied silicone gasket	150/Case
--	----------

N-108-12 Consists of N-108-1 with 2 Snap Seal tamper plugs	150/Case
--	----------

N-108-2 Consists of N-108 with 2 Snap Seal tamper plugs	150/Case
---	----------



W-175 Fits American Welded Steelcase Meter • Will accept 2 Snap Seal #1 tamper plugs (not included)	75/Case
--	---------

W-175-1 Consists of W-175 with SureSeal preapplied silicone gasket	75/Case
--	---------

W-175-12 Consists of W-175-1 with 2 Snap Seal tamper plugs	75/Case
--	---------



OTHER INDEX COVERS



H-150

Fits Hexagram products

- Will accept 2 Tophat tamper plugs (not included)

150/Case



M-110-OS

Fits Mercury Instruments

- Will not accept Snap Seal tamper plugs

169/Case

M-110-OS-1

Consists of M-110-OS with SureSeal preapplied silicone gasket

169/Case



M-110

Fits Mercury Instruments

- Will accept 2 Snap Seal #1 tamper plugs (not included)

169/Case

M-110-1

Consists of M-110 with SureSeal preapplied silicone gasket

169/Case

M-110-12

Consists of M-110-1 with 2 Snap Seal tamper plugs

169/Case

M-110-2

Consists of M-110 with 2 Snap Seal tamper plugs

169/Case



RESIDENTIAL TAMPER SYSTEMS

* All Listed Screws Are Available *



SS #1

Snap Seal #1 fits Index Covers A-101, A-103, W-175, R-103, R-109, S-104, S-105, S-106, S-107, M-110, N-108

- Also fits Cup #1 and Cup #8

1000/Bag



Cup #1

Cup #1 fits Rockwell and Sprague residential hand hole plates

Uses Snap Seal #1 and 1024 pan head screw

500/Bag



SS #2

Snap Seal #2 fits Index Cover R-105

- Also fits Cup #2

1000/Bag



Cup #2

Cup #2 fits American residential hand hole plate

Uses Snap Seal #2 and 1/4-20 pan head screw

500/Bag



Tophat

Tophat tamper plug fits American Meter index covers, cups, and meter top castings

1000/Bag

Cup Tophat

Cup Tophat with hand hole corner tab fits American Meter residential hand hole. Uses Tophat tamper plug

500/Bag



Cup #8

Cup #8 fits American commercial index mounting screw

Uses Snap Seal #1 and 8/32 x 5/8 pan head screw

500/Bag



RESIDENTIAL TAMPER SYSTEMS

* All Listed Screws Are Available *



Cup Hex

Cup Hex fits American residential hex hand hole plate
Uses Snap Seal #1 and 1/4-20 fillister head screw

500/Bag



IT

Installs Snap Seal #1

Each



RT

Removes Snap Seal #1, Snap Seal #2, & Snap Seal #3

Each



COMMERCIAL METER TAMPER SYSTEMS

* All Listed Screws Are Available *



SS #3
Snap Seal #3 fits Cup ABP, Cup AHH, and Cup RHH for commercial meters

As Needed



Cup RHH
Cup RHH fits Rockwell commercial meter hand hole
Uses SS #3 and 5/16 x 1 allen bolt

As Needed



Cup ABP
Cup ABP fits American commercial meter base plate
Uses SS #3 and 18 x 18 x 1-1/8 fillister head screw

As Needed



A-103-1 Kit #1
Protects index, and index mounting screws on American Meter AL800 – AL5000
Consists of A1031, 4 each SS #1, 2 each Cup #8, and 2 each 8/32 x 5/8 pan head screw

As Needed



Cup AHH
Cup AHH fits American commercial meter hand hole
Uses SS #3 and 3/8 x 1-1/2 allen bolt

As Needed

A-103-1 Kit #2
Protects index, index mounting screws and base plate on American Meter AL800 – AL5000
Consists of A1031, 4 each SS #1, 2 each Cup #8, 2 each 8/32 x 5/8 pan head screw, 1 each Cup ABP, 1 each SS #3, and 1 each 18 x 18 x 1 1/8 fillister head screw

As Needed

A-103-1 Kit #3
Protects index, index mounting screws, base plate, and hand hole on American Meter AL800– AL5000
Consists of A1031, 4 each SS #1, 2 each Cup #8, 2 each 8/32 x 5/8 pan head screw, 1 each Cup ABP, 1 each 18 x 18 x 1 1/8 fillister head screw, 1 each Cup AHH, 1 each 3/8 x 1 1/2 allen bolt, and 2 each SS #3

As Needed



COMMERCIAL METER TAMPER SYSTEMS

* All Listed Screws Are Available *



R-105

Kit Protects index, hand hole on R415, 750 – 3000
Consists of R105, 2 each SS #2, 1 each Cup RHH, and
1 each 5/16 x 1 allen bolt

As Needed



Cup RHH Kit

Protects hand hole on R415, 750 – 3000
Consists of 1 each Cup RHH, 1 each SS #3, and
1 each 5/16 x 1 allen bolt

As Needed



Cup ABP Kit

Protects base plate on American Meter AL800 – AL5000
Consists of 1 each Cup ABP, 1 each SS #3, and
1 each 18 x 18 x 1-1/8 fillister head screw

As Needed



Cup AHH Kit

Protects hand hole on American Meter AL800 – AL5000
Consists of 1 each Cup AHH, 1 each SS #3, and
1 each 3/8 x 1-1/2 allen bolt

As Needed



PAINT COVERS



PC A1
Fits A-101 and A-101-OS Index Covers

As Needed



PC R3
Fits R-103, R-103-OS, and R-104 Index Covers

As Needed



PC A-40G
Fits A-40G Index Cover

As Needed



PC R-40G
Fits R-40G Index Cover

As Needed



PC A3
Fits A-103 and A-103-OS Index Covers

As Needed



PC R5
Fits R-105 Index Cover

As Needed



PC A3-40G
Fits A-103 Index Cover and
Commercial American 40G ERT

As Needed



PC S5
Fits S-105 Index Cover

As Needed



PAINT COVERS



PC N8
Fits N-108 Index Cover

As Needed



PC Sensus W
Fits SENSUS Water Meter

As Needed



PC Cellnet A
Fits Cellnet American

As Needed



PC A3 Hinged
Fits A-103

As Needed



PC Cellnet R
Fits Cellnet Rockwell

As Needed



PC Cellnet S
Fits Cellnet Sprague

As Needed



METER SCREWS

ADDITIONAL SCREWS

37-S

1/4-20 x 3/4 Rockwell Combo Case Screw



AMERICAN METER SCREWS

30-S

1/4-20 x 5/8 fillister for A-101 & A-101-OS

31-S

1/4-20 x 3/4 pan head for #2 Cup

32-S

12-24 x 1/2 fillister for A-103 (AL1000, AL1400, AL2300)

33-S

8-32 x 5/8 binder head index mounting screw for back of A-103 & #8 Cup

34-S

18 x 18 x 1 1/8 fillister head for ABP Cup

35-S

3/8 x 16 x 1 1/2 allen head for AHH Cup

36-S

8-32 x 3/16 round head for American index

SENSUS/ROCKWELL METER SCREWS

51-S

10-24 x 1/2 fillister for R-103 & R-103-OS

41-S

10-24 x 3/4 fillister for R-104 & Rockwell ERT index cover

42-S

5/16 x 18 x 1 allen head for RHH Cup & R105 index cover

43-S

10-24 X 5/8 pan head for #1 Cup

44-S

5/16 x 18 x 1 fillister for R-105

45-S

6-32 x 5/8 fillister for Rockwell index

53-S

10-24 x 5/8 longer thread)fillister for R-103 & Rockwell hand hole cover

ACTARIS/SPRAGUE METER SCREWS

50-S

10-24 x 1 x 5/8 flat head for S-104

51-S

10-24 x 1/2 fillister head for S-105

52-S

#6 Drive stud for badge plate on S-104 & S-105

54-S

10-24 x 1/4 pan head for residential Sprague Index



MISCELLANEOUS PARTS



RV
90° 3/4 inch full flow internal relief regulator vent

400/Case



NNP - 20LT
20LT Meter Nut Plug / Glass Filled Nylon - Quantity as needed

Meets ANSI B 109.1
Pressure Rating - 100 PSIG
Weighs 21 grams versus Iron weight of 133 grams

METER GASKETS

30-C Cork gasket for A-101 & A-101-OS index covers	As Needed
31-C Cork gasket for A-103& A-103-OS index covers	As Needed
32-C Cork gasket for ITRON ERT Residential American • One side adhesive	As Needed
40-C Cork gasket for R-103, R-103-OS, & R-104 index covers	As Needed
41-C Cork gasket for ITRON ERT Residential Rockwell • One side adhesive	As Needed
50-C Cork gasket for S-105 index covers	As Needed
51-C Cork gasket for ITRON ERT Residential Sprague • One side adhesive	As Needed
Custom Molding We can produce any part you might need	Call